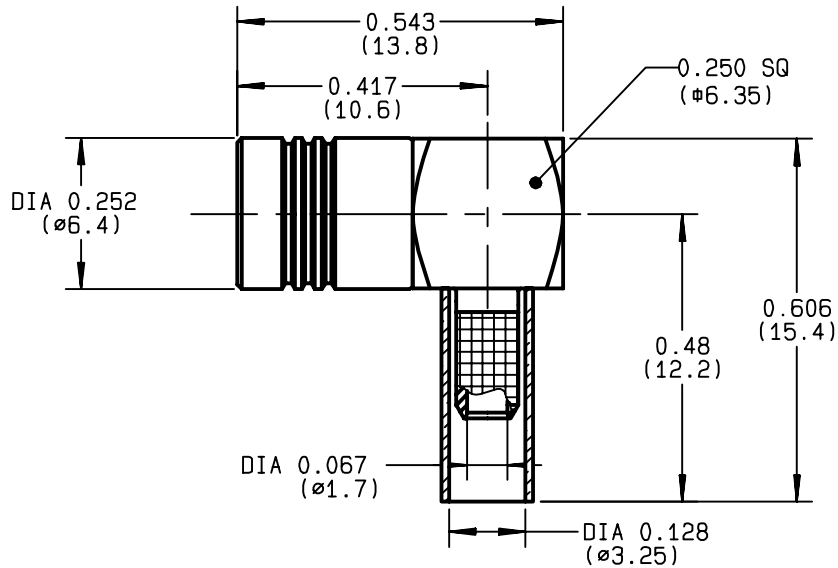


**RIGHT ANGLE PLUG CRIMP TYPE
CABLE 2.6/50+75 S**

R114.186.120
SERIES SMB



NOMINAL IMPEDANCE	50 Ω	CABLES : KX 22A
FREQUENCY RANGE	0-4 GHz	RG 179
TEMPERATURE RATING	-65/+165 °C	RG 187
V.S.W.R	1.35 + .04 x F(GHz)Maxi	RG 188
RF INSERTION LOSS	0.5 √F(GHz) dB Maxi	RG 316
VOLTAGE RATING	335 Veff Maxi	
DIELECTRIC WITHSTANDING VOLTAGE	1000 Veff Mini	
INSULATION RESISTANCE	1000 MΩMini	OTHERS CHARACTERISTICS
HERMETIC SEAL	NA Atm.cm ³ /s	CABLE RETENTION 110 N Mini
LEAKAGE (pressurized only)	NA	CENTER CONTACT RETENTION
MECHANICAL DURABILITY	500 Cycles	Axial force - mating end 10 N Mini
WEIGHT	gr	Axial force - opposite end 10 N Mini
SPECIFICATION		Torque NA cm.N Mini
		RECOMMENDED TORQUES
		Mating NA cm.N
		Panel nut NA cm.N
		Clamp nut NA cm.N

CONNECTOR PARTS:	MATERIALS	FINISH	(all values are given) in micrometers
BODY	BRASS	NICKEL 2	
OUTER CONTACT	BRONZE	GOLD OVER NICKEL	
CENTER CONTACT	BERYLLIUM COPPER	GOLD 0.5 OVER NICKEL 2	
INSULATOR	PTFE	-	
GASKET	-	-	
OTHERS PIECES	ZAMAK	NICKEL 2 OVER COPPER 8	

ISSUE	CREATION DATE	FILE PART-NUMBER
9851D01	02/01/1992	91-0400-915



PERRIN.Y

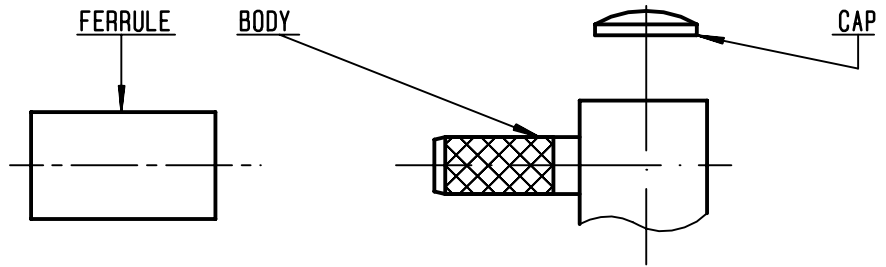
The information given here is subject to change without notice.
Design changes may be in order to improve the product .

Connect to the future



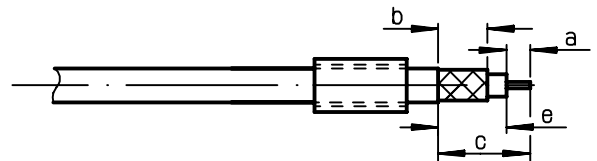
R114.186.120

ISSUE **9851D01** SERIES **SMB**



①

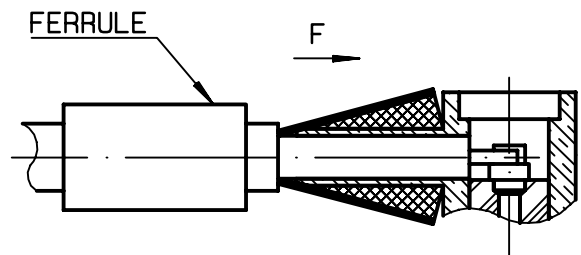
Slide ferrule onto cable .
Strip the cable .
-
-



Stripping	a	b	c	d	e
inch	0.059	0.213	0.378	0	0.319
mm	1.5	5.4	9.6		8.1

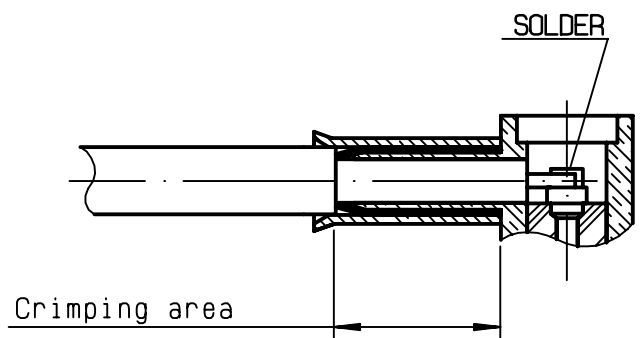
②

Fan the braid .
Push connector body under the braid .
Slide ferrule over braid
(in direction F)
-
-



③

Crimp the ferrule with crimping tool R282 211 000 (Hex. : 0.128) or crimping tool R 282 293 000 (M22520/5-01) + dies R 282 235 003 (M22520/5-03) Solder inner conductor .



④

Place the cap into body.
Press cap flush or slightly below surface of body assembly .
-
-
-
-
-

